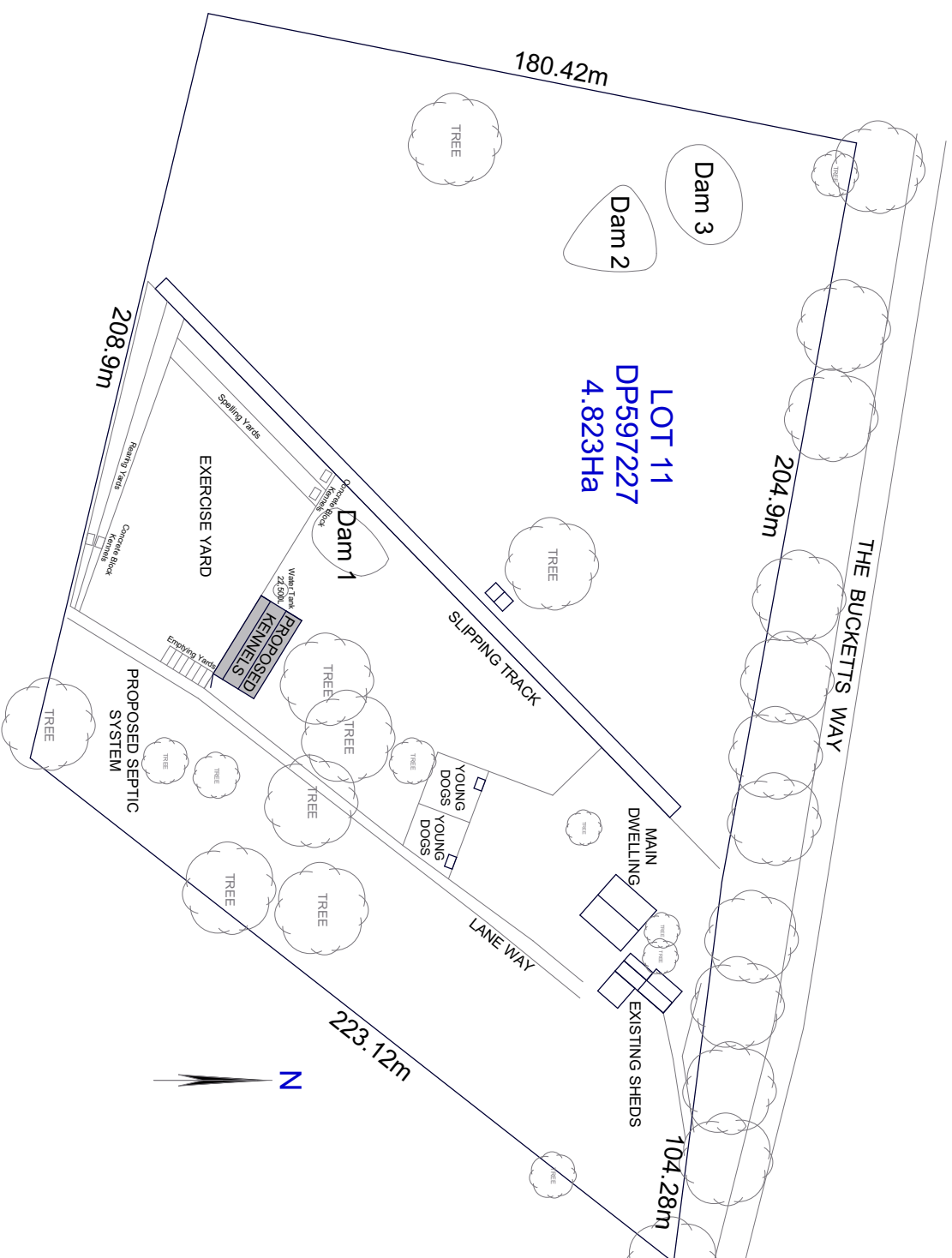
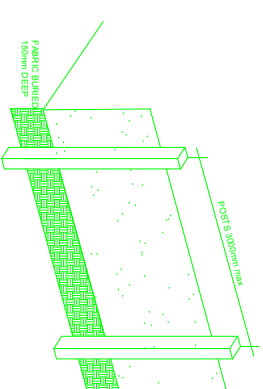


## GENERAL NOTES



## SEDIMENT CONTROLS

1. ALL EROSION & SEDIMENT CONTROL MEASURES INCLUDING REVEGETATION & STORAGE OF SOIL & TOPSOIL SHALL BE IMPLEMENTED TO THE STANDARDS OF THE SOIL CONSERVATION OF NSW
2. ALL DRAINAGE WORKS SHALL BE CONSTRUCTED & STABILIZED AS EARLY AS POSSIBLE DURING DEVELOPMENT.
3. SEDIMENT TRAPS SHALL BE CONSTRUCTED AROUND ALL INLET PITS CONSISTING OF 300 WIDE X 300mm DEEP TRENCH.
4. ALL SEDIMENT BASINS & TRAPS SHALL BE CLEARED WHEN THE STRUCTURES ARE A MAX OF 60% FULL OF SOIL MATERIALS INCLUDING THE MATERIALS OF THE DRAINAGE.
5. MATERIALS OF THE DRAINAGE SHALL BE REVEGETATED AS SOON AS THE RELEVANT 6. SOIL & TOPSOIL STOCK PILES SHALL BE LOCATED AWAY FROM DRAINAGE LINES & AREAS WHERE WATER MAY CONCENTRATE.
7. FILTER FABRIC SHALL BE CONSTRUCTED BY STRETCHING A FILTER FABRIC BETWEEN POSTS 3m CENTERS & BURIED A MIN OF 150mm DEEP ALONG ITS LOWER EDGE.

[illegible]